

Slit type mixer



Features

- Have a low pressure loss
- Reduced size.
- Better mixing performance

Basic specifications

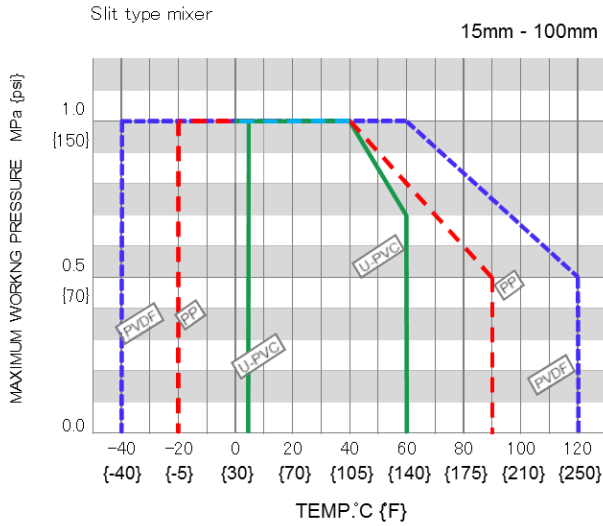
Form	Connection	Size	Material	
		15 - 100mm (1/2 - 4")	Body	Sealing
True union	Flanged	○	U-PVC,PP,PVDF	EPDM FKM
	Socket	○	U-PVC,PP,PVDF	EPDM FKM
	Threaded	○	U-PVC,PP,PVDF	EPDM FKM

Item	Unit	Nominal size mm(inch)								
		15 (1/2)	20 (3/4)	25 (1)	32 (1-1/4)	40 (1-1/2)	50 (2)	65 (2-1/2)	80 (3)	100 (4)
Temperature(U-PVC)	°C [°F]	5~60 [40 ~ 140]								
Temperature (PP)	°C [°F]	-20~90 [-5~195]								
Temperature(PVDF)	°C [°F]	-40~120 [-40~250]								
Proof Pressure	MPa[PSI]	1.0 [150]								
Working Pressure range	MPa[PSI]	0 ~ 1.0 [0 ~ 150]								
Ambient Temperature	°C [°F]	10 ~ 40 [50 ~ 105]								
Installation direction	-	Horizontal, Vertical								
Connection	True union	- Flanged, Socket, Threaded								
Cv value	-	4	6	10	16	25	42	70	94	161

Note: The maximum working pressure is the value including the water hammer pressure. Be careful that the maximum working pressure is not exceeded during use.

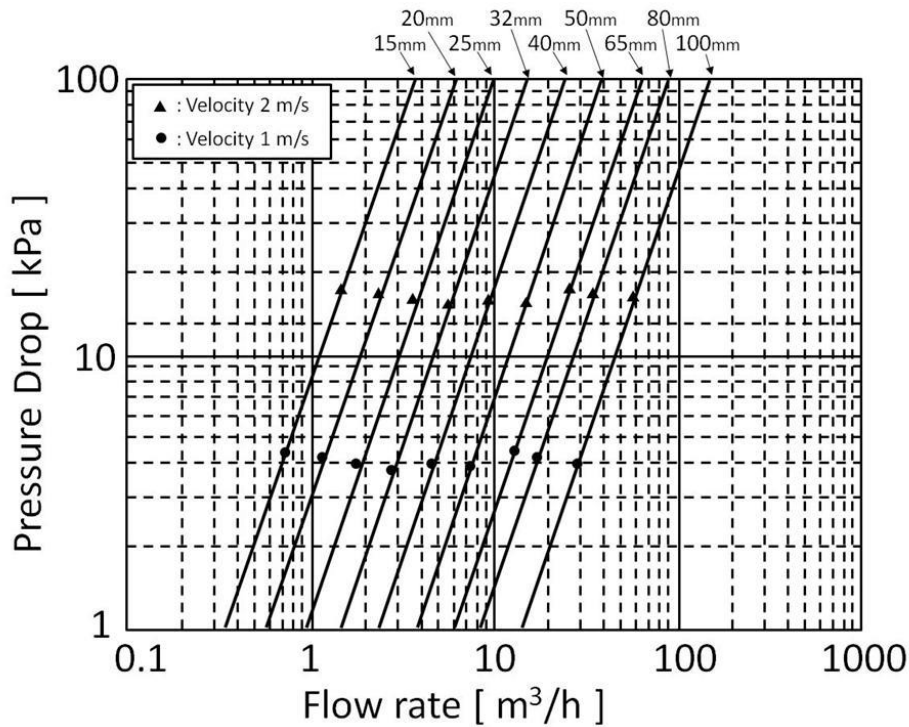
* Concerning the allowable pressure for each temperature, material and actuator type, see the technical documents at the next page of this sheet.

Working pressure vs. Temperature



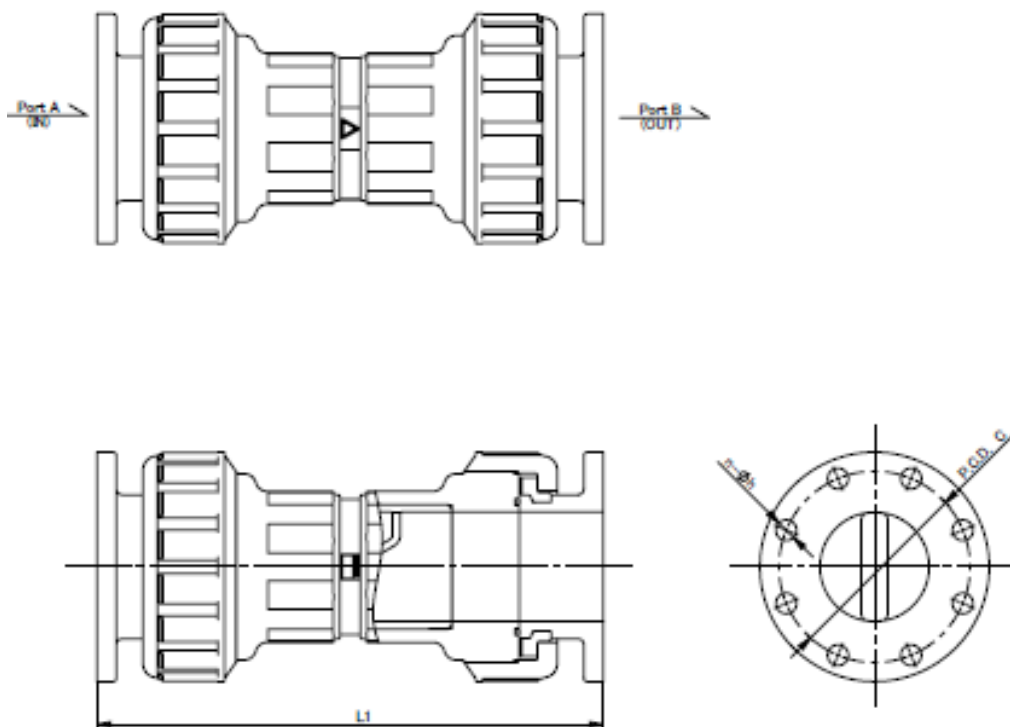
Note : Make sure that the temperature and pressure are within the working range during operation.
(If the tolerance range is exceeded during use, the valve may be damaged.)

Pressure drop

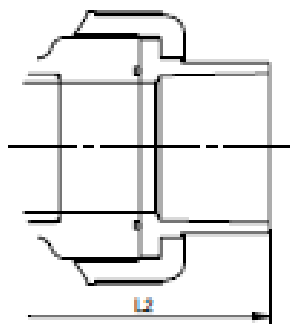


Product dimension

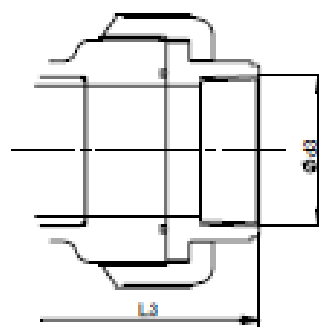
Flanged



Socket



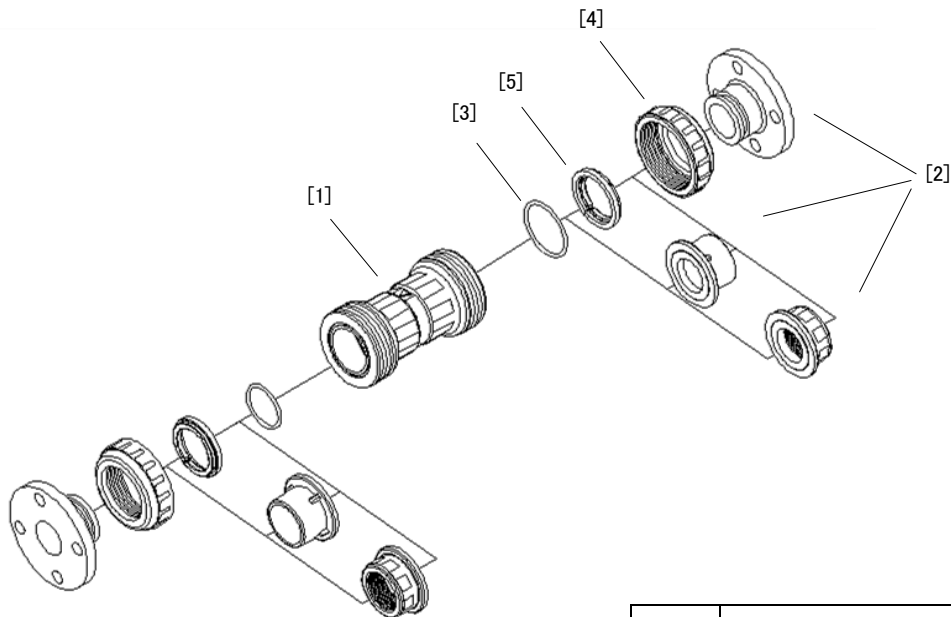
Threaded



■JIS,DIN,ANSI(Unit:mm)(U-PVC)

mm	JIS			d3	ANSI			DIN		
	L1	L2	L3		L1	L2	L3	L1	L2	L3
15	148	113	107	Rc1/2	148	117	107	135	106	107
20	188	144	136	Rc3/4	188	146	136	166	135	136
25	202	160	146	Rc1	202	160	146	175	146	146
32	204	176	164	Rc1.1/4	204	178	164	194	164	164
40	235	212	186	Rc1.1/2	235	207	186	223	187	186
50	248	233	211	Rc2	248	222	211	244	210	211
65	334	348	290	Rc2.1/2	334	315	290	363	308	290
80	388	398	347	Rc3	388	364	347	394	366	347
100	464	509	452	Rc4	464	442	452	464	463	452

For the dimension of PP or PVDF, please consult us

Parts list


No.	DESCRIPTION
[1]	Body
[2a]	End connector (Flange end)
[2b]	End connector (Socket end)
[2c]	End connector (Threaded end)
[3]	O-ring
[4]	Union nut
[5]	Stop ring